



**Certificate of Analysis**  
Compliance Test

Client Information:

**SUMMITT LABS**  
5901 Orient Rd  
TAMPA, FL 33610

Batch # RI 017  
Batch Date: 2025-02-26  
Extracted From: Hemp

Test Reg State: Kentucky

Order # SUM250226-120001  
Order Date: 2025-02-26  
Sample # AAGL147

Sampling Date: 2025-02-27  
Lab Batch Date: 2025-02-27  
Orig. Completion Date: 2025-03-21

Initial Gross Weight: 36.988 g

Number of Units: 1  
Net Weight per Unit: 6500.000 mg  
Sampling Method: MSP 7.3.1

Statement of Amendment: Report format; Updated Description; Updated Net Weight



<b>Potency Tested</b>	<b>Heavy Metals Passed</b>	<b>Mycotoxins Passed</b>	<b>Pesticides Passed</b>	<b>Residual Solvents Passed</b>
<b>Pathogenic Passed</b>	<b>Microbiology (qPCR) Passed</b>	<b>Filth and Foreign Passed</b>		

Product Image

**Delta 8/Delta 10 Potency 13 - (LCUV)**  
Specimen Weight: 1506.700 mg

**Tested**  
SOP13.001 (LCUV)

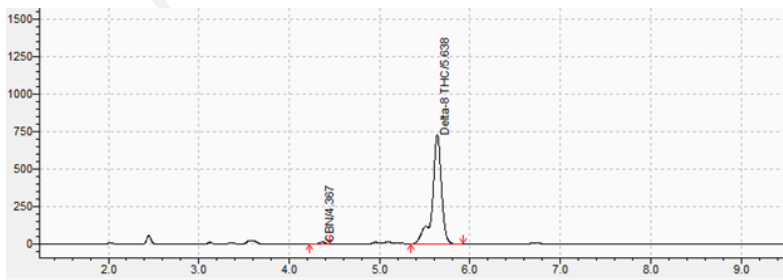
Pieces For Panel: 6

Analyte	LOD (mg/g)	LOQ (%)	Result (mg/g)	(%)
Delta-8 THC	2.60E-5	0.0015	62.020	6.202
CBN	1.40E-5	0.0015	0.350	0.035
CBC	1.80E-5	0.0015	<LOQ	<LOQ
CBD	5.40E-5	0.0015	<LOQ	<LOQ
CBDA	1.00E-5	0.0015	<LOQ	<LOQ
CBDV	6.50E-5	0.0015	<LOQ	<LOQ
CBG	2.48E-4	0.0015	<LOQ	<LOQ
CBGA	8.00E-5	0.0015	<LOQ	<LOQ
Delta-10 THC	3.00E-6	0.0015	<LOQ	<LOQ
Delta-9 THC	1.30E-5	0.0015	<LOQ	<LOQ
Delta6a10a-THC	8.47E-5	0.0015	<LOQ	<LOQ
THCA-A	3.20E-5	0.0015	<LOQ	<LOQ
THCV	7.00E-6	0.0015	<LOQ	<LOQ
Total Active CBD			<LOQ	<LOQ
Total Active THC			<LOQ	<LOQ

**Potency Summary**

<b>Total Delta 8</b> 6.202% 403.130 mg	<b>Total Delta 10</b> None Detected
<b>Total Active THC</b> None Detected	<b>Total Active CBD</b> None Detected
<b>Total CBG</b> None Detected	<b>Total CBN</b> 0.035% 2.275 mg
<b>Total Cannabinoids</b> 6.237% 405.405 mg	

Chromatogram



Aixia Sun Lab Director/Principal Scientist  
D.H.Sc., M.Sc., B.Sc., MT (AAB)



Definitions and Abbreviations used in this report: Total Active CBD = CBD + (CBD-A \* 0.877), \*Total CBDV = CBDV + (CBDVA \* 0.867), Total Active THC = THCA-A \* 0.877 + Delta 9 THC, Total THC = THC + (THCVA \* 0.87), CBG Total = (CBGA \* 0.878) + CBG, CBN Total = (CBNA \* 0.876) + CBN, Total CBC = CBC + (CBCA \* 0.877), Total THC-O-Acetate = Delta 8 THC-O-Acetate + Delta 9 THC-O-Acetate, Total THCP = Delta8-THCP + Delta9-THCP, Total Cannabinoids = Total percentage of cannabinoids within the sample. (mg/ml) = Milligrams per Milliliter, LOQ = Limit of Quantitation, LOD = Limit of Detection, Dilution = Dilution Factor, (ppb) = Parts per Billion, (%) = Percent, (cfu/g) = Colony Forming Unit per Gram, (µg/g) = Microgram per Gram, (ppm) = Parts per Million, (ppm) = (µg/g), (aw) = Water Activity, (mg/Kg) = Milligram per Kilogram, The results apply to the sample as received. Revised report- see statement of amendment above.

This report shall not be reproduced, without written approval, from ACS Laboratory. The results of this report relate only to the material or product analyzed. Test results are confidential unless explicitly waived otherwise. ACS Laboratory is accredited to the ISO/IEC 17025:2017 Standard.



**Certificate of Analysis**  
Compliance Test

Client Information:

**SUMMITT LABS**  
5901 Orient Rd  
TAMPA, FL 33610

Batch # RI 017  
Batch Date: 2025-02-26  
Extracted From: Hemp

Test Reg State: Kentucky

Order # SUM250226-120001  
Order Date: 2025-02-26  
Sample # AAGL147

Sampling Date: 2025-02-27  
Lab Batch Date: 2025-02-27  
Orig. Completion Date: 2025-03-21

Initial Gross Weight: 36.988 g

Number of Units: 1  
Net Weight per Unit: 6500.000 mg  
Sampling Method: MSP 7.3.1

**PCR Total Yeast and Mold**  
Specimen Weight: 522.700 mg

**Passed**  
SOP13.017 (qPCR)

Dilution Factor: 8.000

Analyte	Action Level (cfu/g)	LOQ (cfu/g)	Result (cfu/g)
Total Yeast/Mold	100000	1000	<LOQ
Prep. By: 1161	Date: 2025-03-01 08:40:25	Analyzed By: 1161	Date: 2025-03-01 08:40:25
Reviewed By: 1225	Date: 2025-03-01 18:06:11	Lab Batch #: AAGL147-218	Date: 2025-03-01 18:06:11

**Pathogenic SAE (qPCR)**  
Specimen Weight: 1029.800 mg

**Passed**  
SOP13.029 (qPCR)

Dilution Factor: 1.000

Analyte	Action Level (cfu/g)	Result (cfu/g)	Analyte	Action Level (cfu/g)	Result (cfu/g)
Aspergillus (Flavus, Fumigatus, Niger, Terreus)	1	Absence in 1g	Salmonella	1	Absence in 1g
E.Coli	1	Absence in 1g			

**Filth and Foreign Material**  
Specimen Weight: N/A Dilution Factor: 1.000

**Passed**  
SOP13.020 (Electronic Balance)

Analyte	Action Level (%)	Result (%)	Analyte	Action Level (%)	Result (%)
Covered Area	10	0.000	Weight %	1	0.000
Feces	0.5	0.000			

*Aixia Sun*  
Aixia Sun Lab Director/Principal Scientist  
D.H.Sc., M.Sc., B.Sc., MT (AAB)

Definitions are found on page 1

This report shall not be reproduced, without written approval, from ACS Laboratory. The results of this report relate only to the material or product analyzed. Test results are confidential unless explicitly waived otherwise. ACS Laboratory is accredited to the ISO/IEC 17025:2017 Standard.





**Certificate of Analysis**  
Compliance Test

Client Information:

**SUMMITT LABS**  
5901 Orient Rd  
TAMPA, FL 33610

Batch # RI 017  
Batch Date: 2025-02-26  
Extracted From: Hemp

Test Reg State: Kentucky

Order # SUM250226-120001  
Order Date: 2025-02-26  
Sample # AAGL147

Sampling Date: 2025-02-27  
Lab Batch Date: 2025-02-27  
Orig. Completion Date: 2025-03-21

Initial Gross Weight: 36.988 g

Number of Units: 1  
Net Weight per Unit: 6500.000 mg  
Sampling Method: MSP 7.3.1



**Heavy Metals**

Specimen Weight: 246.600 mg

**Passed**  
SOP13.048 (ICP-MS)

Dilution Factor: 202

Analyte	LOD (ppb)	LOQ (ppb)	Action Level (ppb)	Result (ppb)	Analyte	LOD (ppb)	LOQ (ppb)	Action Level (ppb)	Result (ppb)
Arsenic (As)	4.83	100	1500	<LOQ	Lead (Pb)	11.76	100	500	<LOQ
Cadmium (Cd)	.64	100	500	<LOQ	Mercury (Hg)	.58	100	3000	<LOQ



**Mycotoxins**

Specimen Weight: 584.000 mg

**Passed**  
SOP13.007 (LCMS)

Dilution Factor: 2.570

Analyte	LOD (ppb)	LOQ (ppb)	Action Level (ppb)	Result (ppb)	Analyte	LOD (ppb)	LOQ (ppb)	Action Level (ppb)	Result (ppb)
Aflatoxin B1	3.0400E-1	6	20	<LOQ	Aflatoxin G2	2.7100E-1	6	20	<LOQ
Aflatoxin B2	7.7000E-2	6	20	<LOQ	Ochratoxin A	7.5400E-1	3.8	20	<LOQ
Aflatoxin G1	3.0400E-1	6	20	<LOQ					



**Residual Solvents - FL (CBD)**

Specimen Weight: 16.000 mg

**Passed**  
SOP13.039 (GCMS-HS)

Dilution Factor: 1.000

Analyte	LOD (ppm)	LOQ (ppm)	Action Level (ppm)	Result (ppm)	Analyte	LOD (ppm)	LOQ (ppm)	Action Level (ppm)	Result (ppm)
1,1-Dichloroethene	0.0094	0.16	8	<LOQ	Heptane	0.0013	1.39	5000	<LOQ
1,2-Dichloroethane	0.0003	0.04	2	<LOQ	Hexane	0.068	1.17	290	<LOQ
Acetone	0.015	2.08	5000	<LOQ	Isopropyl alcohol	0.0048	1.39	500	<LOQ
Acetonitrile	0.06	1.17	410	<LOQ	Methanol	0.0005	0.69	3000	11.899
Benzene	0.0002	0.02	2	<LOQ	Methylene chloride	0.0029	2.43	600	<LOQ
Butanes	0.4167	2.5	2000	<LOQ	Pentane	0.037	2.08	5000	<LOQ
Chloroform	0.0001	0.04	60	<LOQ	Propane	0.031	5.83	2100	<LOQ
Ethanol	0.0021	2.78	5000	<LOQ	Toluene	0.0009	2.92	890	<LOQ
Ethyl Acetate	0.0012	1.11	5000	<LOQ	Total Xylenes	0.0001	2.92	2170	<LOQ
Ethyl Ether	0.0049	1.39	5000	<LOQ	Trichloroethylene	0.0014	0.49	80	<LOQ
Ethylene Oxide	0.0038	0.1	5	<LOQ					

*Aixia Sun*  
Aixia Sun Lab Director/Principal Scientist  
D.H.Sc., M.Sc., B.Sc., MT (AAB)

Definitions are found on page 1

This report shall not be reproduced, without written approval, from ACS Laboratory. The results of this report relate only to the material or product analyzed. Test results are confidential unless explicitly waived otherwise. ACS Laboratory is accredited to the ISO/IEC 17025:2017 Standard.





**Certificate of Analysis**  
Compliance Test

Client Information:

**SUMMITT LABS**

5901 Orient Rd  
TAMPA, FL 33610

Batch # RI 017  
Batch Date: 2025-02-26  
Extracted From: Hemp

Test Reg State: Kentucky

Order # SUM250226-120001  
Order Date: 2025-02-26  
Sample # AAGL147

Sampling Date: 2025-02-27  
Lab Batch Date: 2025-02-27  
Orig. Completion Date: 2025-03-21

Initial Gross Weight: 36.988 g

Number of Units: 1  
Net Weight per Unit: 6500.000 mg  
Sampling Method: MSP 7.3.1

**Pesticides**

Specimen Weight: 584.000 mg

**Passed**  
SOP13.007 (LCMS)

Dilution Factor: 2.570

Analyte	LOD (ppb)	LOQ (ppb)	Action Level (ppb)	Result (ppb)	Analyte	LOD (ppb)	LOQ (ppb)	Action Level (ppb)	Result (ppb)
Abamectin	2.8800E-1	28.23	300	<LOQ	Fludioxonil	1.7400E+0	48	3000	<LOQ
Acephate	2.3000E-2	30	3000	<LOQ	Hexythiazox	4.9000E-2	30	2000	<LOQ
Acequinocyl	9.5640E+0	48	2000	<LOQ	Imazalil	2.4800E-1	30	100	<LOQ
Acetaminiprid	5.2000E-2	30	3000	<LOQ	Imidacloprid	9.4000E-2	30	3000	<LOQ
Aldicarb	2.6000E-2	30	100	<LOQ	Kresoxim Methyl	4.2000E-2	30	1000	<LOQ
Azoxystrobin	8.1000E-2	10	3000	<LOQ	Malathion	8.2000E-2	30	2000	<LOQ
Bifenazate	1.4150E+0	30	3000	<LOQ	Metalaxyl	8.1000E-2	10	3000	<LOQ
Bifenthrin	4.3000E-2	30	500	<LOQ	Methiocarb	3.2000E-2	30	100	<LOQ
Boscalid	5.5000E-2	10	3000	<LOQ	Methomyl	2.2000E-2	30	100	<LOQ
Captan	6.1200E+0	30	3000	<LOQ	methyl-Parathion	1.7100E+0	10	100	<LOQ
Carbaryl	2.2000E-2	10	500	<LOQ	Mevinphos	2.1500E+0	10	100	<LOQ
Carbofuran	3.4000E-2	10	100	<LOQ	Myclobutanil	1.0290E+0	30	3000	<LOQ
Chlorantraniliprole	3.3000E-2	10	3000	<LOQ	Naled	9.5000E-2	30	500	<LOQ
Chlordane	1.0000E+1	10	100	<LOQ	Oxamyl	2.5000E-2	30	500	<LOQ
Chlorfenapyr	3.4000E-2	30	100	<LOQ	Paclbutrazol	6.5000E-2	30	100	<LOQ
Chloromequat Chloride	1.0800E-1	10	3000	<LOQ	Pentachloronitrobenzene	1.3200E+0	10	200	<LOQ
Chlorpyrifos	3.5000E-2	30	100	<LOQ	Permethrin	3.4300E-1	30	1000	<LOQ
Clofentezine	1.1900E-1	30	500	<LOQ	Phosmet	8.2000E-2	30	200	<LOQ
Coumaphos	3.7700E+0	48	100	<LOQ	Piperonylbutoxide	2.9000E-2	30	3000	<LOQ
Cyfluthrin	3.1100E+0	30	1000	<LOQ	Prallethrin	7.9800E-1	30	400	<LOQ
Cypermethrin	1.4490E+0	30	1000	<LOQ	Propiconazole	7.0000E-2	30	1000	<LOQ
Daminozide	8.8500E-1	30	100	<LOQ	Propoxur	4.6000E-2	30	100	<LOQ
Diazinon	4.4000E-2	30	200	<LOQ	Pyrethrins	2.3593E+1	30	1000	<LOQ
Dichlorvos	2.1820E+0	30	100	<LOQ	Pyridaben	3.2000E-2	30	3000	<LOQ
Dimethoate	2.1000E-2	30	100	<LOQ	Spinetoram	8.0000E-2	10	3000	<LOQ
Dimethomorph	5.8300E+0	48	3000	<LOQ	Spinosad	8.8000E-2	30	3000	<LOQ
Ethoprophos	3.6000E-1	30	100	<LOQ	Spiromesifen	2.6100E-1	30	3000	<LOQ
Etofenprox	1.1600E-1	30	100	<LOQ	Spirotetramat	8.9000E-2	30	3000	<LOQ
Etoxazole	9.5000E-2	30	1500	<LOQ	Spiroxamine	1.3100E-1	30	100	<LOQ
Fenhexamid	5.1000E-1	10	3000	<LOQ	Tebuconazole	6.7000E-2	30	1000	<LOQ
Fenoxycarb	1.0700E-1	30	100	<LOQ	Thiacloprid	6.4000E-2	30	100	<LOQ
Fenpyroximate	1.3800E-1	30	2000	<LOQ	Thiamethoxam	5.0000E-2	30	1000	<LOQ
Fipronil	1.0700E-1	30	100	<LOQ	Trifloxystrobin	3.7000E-2	30	3000	<LOQ
Flonicamid	5.1700E-1	30	2000	<LOQ					

*Aixia Sun*  
Aixia Sun Lab Director/Principal Scientist  
D.H.Sc., M.Sc., B.Sc., MT (AAB)

Definitions are found on page 1

This report shall not be reproduced, without written approval, from ACS Laboratory. The results of this report relate only to the material or product analyzed. Test results are confidential unless explicitly waived otherwise. ACS Laboratory is accredited to the ISO/IEC 17025:2017 Standard.

